

NETGEAR®



Powerline Music Extender XAUB2511 Installation Guide

Compatible with Airplay®



XAUB2511 and XAV1601 included.
Other devices shown not included.

- Play music from tablet, smartphone or computer on your stereo system
- Extend a home network and USB connection to any power outlet

Contents

Package Contents	3
Hardware Features	4
Play Music Anywhere Features	5
Networking Features	6
Set Up Your Powerline Network	8
Connect Your Speakers	10
Set Up ReadySHARE AirMusic	11
Set Up ReadySHARE Music	13
Set Up ReadySHARE Printer	15
Set Up ReadySHARE USB Storage	17
Secure the Powerline Network	19
LED Descriptions	20
Button Descriptions	21
Safety Information	21

Package Contents



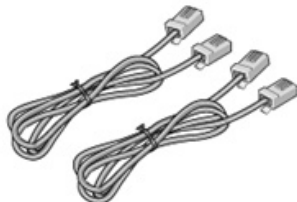
**XAU2511
Music Extender
adapter**



**XAV1601
PassThru
adapter**

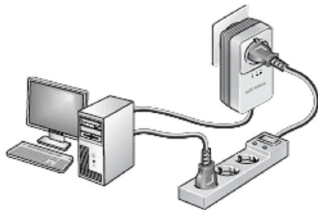
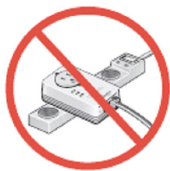


**USB to audio
cable**



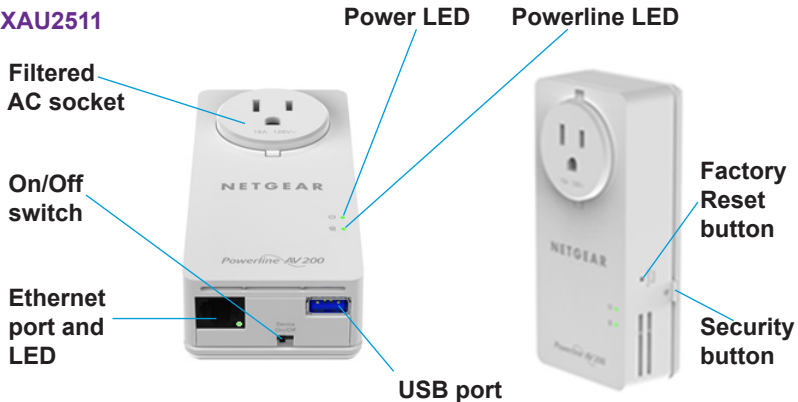
Ethernet cables (2)

NETGEAR recommends that you do not plug a Powerline adapter directly into a power strip.

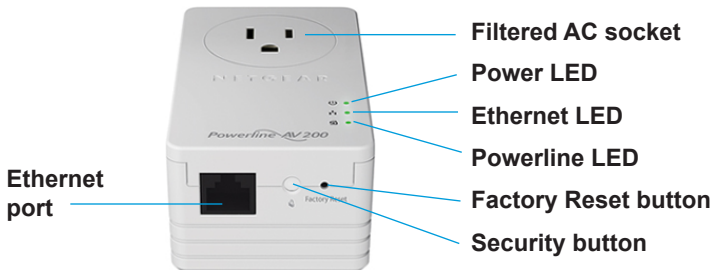


Hardware Features

XAU2511

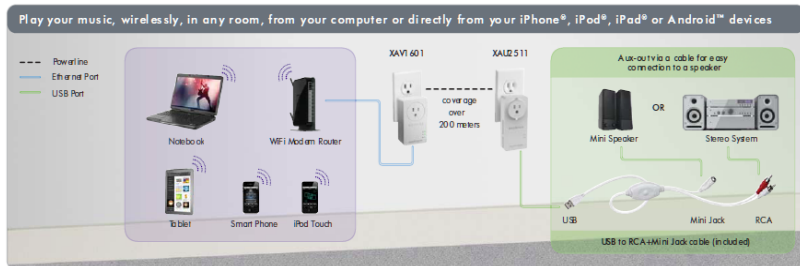


XAV1601



Play Music Anywhere Features

The Powerline Music Extender lets you play music wirelessly throughout your home.



ReadySHARE AirMusic

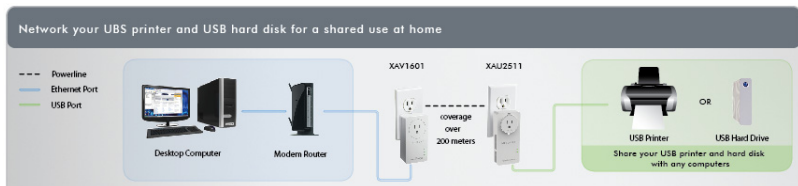
ReadySHARE AirMusic lets you stream music to your speakers from your iPhone, iPad, iPod touch, or Android device.

ReadySHARE Music

ReadySHARE Music lets you stream music to your speakers from your computer.

Networking Features

The Powerline Music Extender lets you let you connect USB printers and storage devices to your home network so that they can be accessed wirelessly.



ReadySHARE Printer

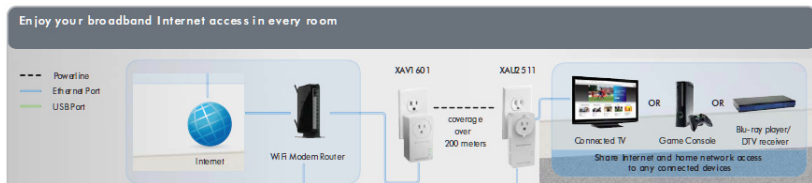
ReadySHARE Printer lets you place your USB printer anywhere in your home. When you connect the printer to the XAU2511, you can use the printer from any computer on your home network.

ReadySHARE USB Storage

ReadySHARE USB Storage lets you share the content on a USB storage device across your home network. When you connect a USB hard drive or memory stick to the XAU2511, you can access its content from any computer on your home network.

Ethernet Port

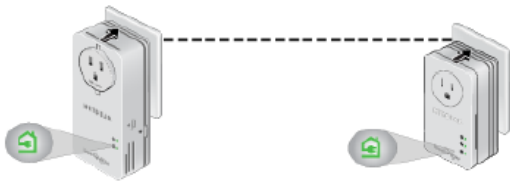
The Powerline Music Extender and PassThru adapters use an Ethernet port to convert a standard electrical wall outlet into a high-speed network connection.



The high-speed network connection brings Internet connectivity to any device with an Ethernet port, such as a game console, Blu-ray™ player, smart TV, HD set-top box, network DVR, or computer.

Set Up Your Powerline Network

- **If you do not have Powerline adapters at home, do the following:**
1. Plug the XAV1601 adapter into an AC wall outlet near your wireless router or gateway.
 2. Connect the XAV1601 to the LAN port of the router or gateway using an Ethernet cable.
 3. Plug the XAU2511 adapter into the AC wall outlet where you want to hear the music or put the printer.
 4. Make sure that the Powerline LEDs on each adapter are lit.
The lit LEDs indicate that the adapters can communicate over the Powerline network.



5. (Optional) Change the default security key on your Powerline network.
See *Secure the Powerline Network* on page 19.

➤ **If you have Powerline adapters at home, do the following:**

1. Plug the XAU2511 adapter into a power outlet.
2. Make sure that the Power LED is solid green on each plugged-in adapter.
3. On the XAU2511 adapter, press the **Security** button for two seconds, and then release the button.

The Power LED blinks green while the adapter is setting up security.

4. Within two minutes, go to one of the Powerline adapters in your existing network and press its **Security** button for two seconds.



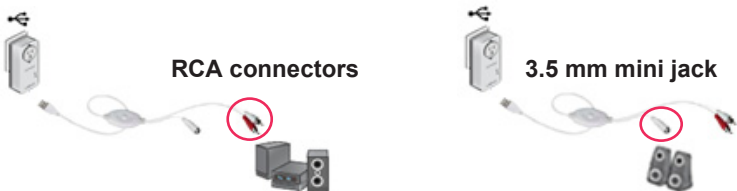
After a few seconds, the security is set and the Power LED turns solid green. The Powerline adapters can communicate over the Powerline network in a secure way.

5. Repeat **step 1** through **step 3** with the XAV1601 adapter. This process ensures that your new XAU2511 and XAV1601 adapters and your existing adapters can communicate using the same security key.

Connect Your Speakers

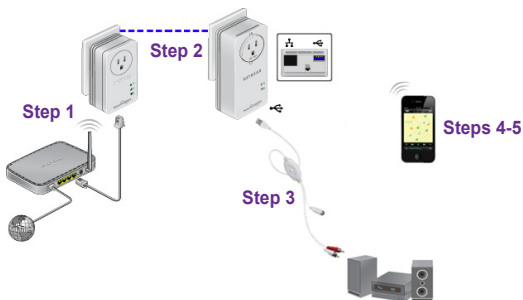
The USB to audio cable with RCA and 3.5-mm mini jack connectors lets you connect all types of speakers to your Music Extender.

- **To connect your speakers to the XAU2511:**
- **USB speakers.** Connect your speakers directly to the XAU2511 USB port.
 - **Hi-Fi audio system.** Connect your system to the XAU2511 USB port using the RCA connectors on the provided USB to audio cable.
 - **Speakers with a mini jack connector.** Connect your speakers to the XAU2511 USB port using the 3.5-mm mini jack connector on the provided USB to audio cable.



Set Up ReadySHARE AirMusic

Using ReadySHARE AirMusic for smartphones and tablets requires a wireless router or gateway.



➤ To set up ReadySHARE AirMusic:

1. Connect the XAV1601 to your wireless router or gateway using one of the provided Ethernet cables.
2. Plug the XAU2511 into any electrical outlet in your home.
3. Connect your speakers to the XAU2511.
4. Connect to your wireless network using your smartphone. Make sure that your smartphone and the XAV1601 are connected to same network.
5. Select music on your smartphone and beam it to the speakers.

- **To play music from your iOS device (iPhone, iPad, or iPod):**
1. Launch the music application.
 2. Click the arrow on the right side of the screen.
 3. Select **XAU2511-XX** in the devices list.

The music plays on the speakers connected to your XAU2511.



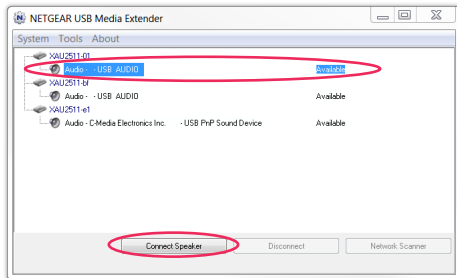
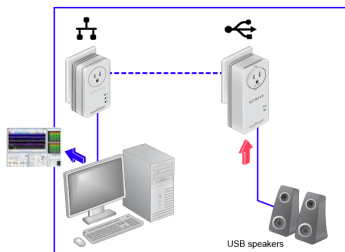
- **To play music from your Android device:**
1. Launch the Google Play app.
 2. Download a free Airplay application and launch it.
 3. Select the music source.
 4. Select a song and play it.
 5. Tap the **Beam** button and select **XAU2511**.

The music plays on the speakers connected to your XAU2511.

Set Up ReadySHARE Music

➤ To set up ReadySHARE Music on your computer:

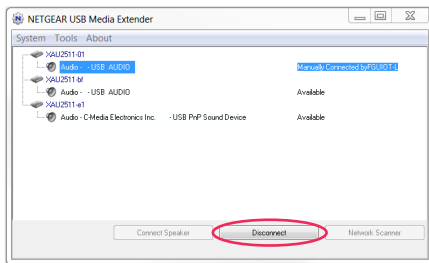
1. Connect your speakers to the XAU2511.



2. On a computer that is connected to the Powerline network, install and launch the NETGEAR USB Media Extender utility. The utility is available on the CD that comes with your adapters. After 30 seconds, the utility detects and displays the XAU2511 adapters and remote speakers on your Powerline network.
3. Select remote speakers that you want to use to play your music. See the figure in **step 1**.
4. Click **Connect Speaker**. The music plays on the selected speakers connected to your XAU2511.

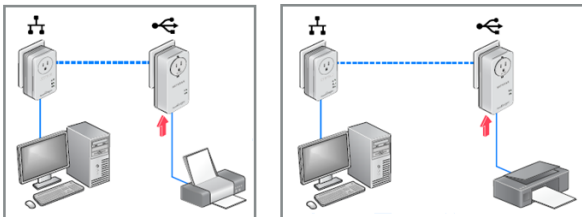
Troubleshooting

- It takes between 30 seconds to one minute to detect the XAU2511 adapter for the first time.
- If you click **Connect** and the music does not play on your remote speakers, click **Disconnect** and then click **Connect** again.
- To stop playing music on the remote speakers, click **Disconnect**.
- You cannot use the XAU2511 in AirMusic mode while it is connected to the NETGEAR Media Extender utility on your computer. To disconnect the XAU2511, click **Disconnect** on the utility.
- Music and system sounds from your computer play through the remote speakers. To play only music, use an Airplay application, such as iTunes, on your computer.
- After you install the NETGEAR USB Media Extender utility, it runs in the background. To display the utility on the screen, click the utility icon on the system tray.



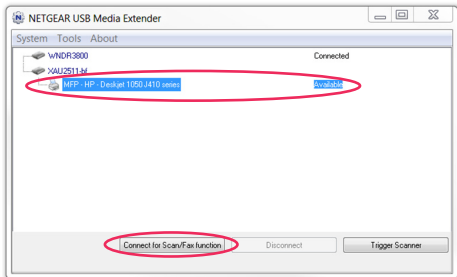
Set Up ReadySHARE Printer

- **To set up ReadySHARE printer on your computer:**
1. Connect the USB printer to the USB port on the XAU2511.



2. On a computer that is connected to the Powerline network, install and launch the NETGEAR USB Media Extender utility. The utility is available on the CD that comes with your adapters. After a few seconds, the utility detects and displays the XAU2511 adapters and remote printers, scanners, or fax machines on your Powerline network.

3. Select the remote printer that you want to connect to.
4. Click **Connect for Scan/Fax function**.



You can now use the remote printer as though it were connected directly to your computer.

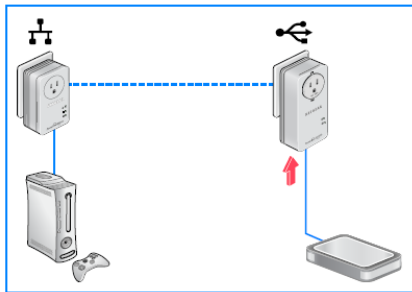
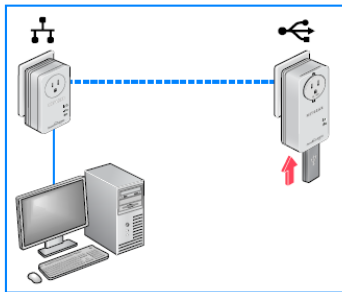
Troubleshooting

If the NETGEAR USB Media Extender utility does not detect the remote printer, make sure that the printer software and driver are installed on your computer.

Set Up ReadySHARE USB Storage

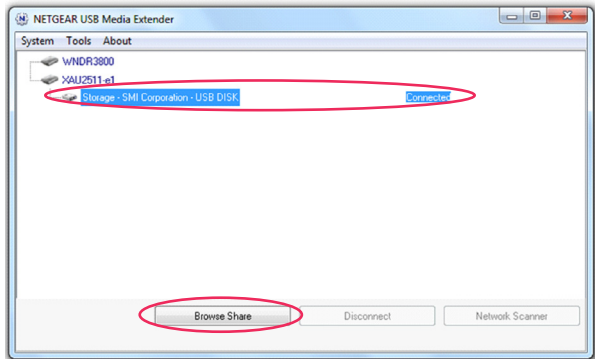
➤ **To set up ReadySHARE USB Storage:**

1. Connect any storage device to the USB port on the XAU2511. For example, you could connect a USB memory stick or hard drive.



2. On a computer that is connected to the Powerline network, install and launch the NETGEAR USB Media Extender utility. The utility is available on the CD that comes with your adapters.

After a few seconds, the utility detects and displays the XAU2511 adapters and remote storage devices on your Powerline network.



3. Select a storage device and click **Browse Share**.
The contents of your storage device display in a file browser.

Troubleshooting

If you use a USB hub to simultaneously connect multiple USB devices, the power from the XAU2511 USB port might not be sufficient to power all of the devices. You might need to power some USB devices using an external power supply.

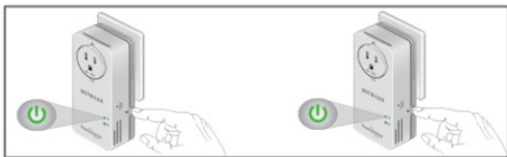
Secure the Powerline Network

➤ **To secure your Powerline network:**

1. Plug each Powerline adapter into a wall outlet.
2. Make sure that the Power LED is solid green on each adapter.
3. On the XAU2511 adapter, press the **Security** button for two seconds, and then release the button.

The Power LED blinks green while the adapter is setting up security.



4. Within two minutes, go to the XAV1601 adapter and press its **Security** button for two seconds, and then release the button.






After a few seconds, the security is set and the Power LED turns solid green. The Powerline adapters can communicate over the Powerline network in a secure way.

LED Descriptions

The LEDs indicate the status of your Powerline adapters.

- When you plug in the adapter, the Power LED  lights and turns green.
- The Ethernet LED  lights and turns green when you connect a powered-on Ethernet device to the adapter's Ethernet port. If the Ethernet LED is off, there is no Ethernet connection.
- The Powerline LED lights when the adapter detects at least one other compatible Powerline device.

The Pick A Plug feature lets you pick the electrical outlet with the fastest link rate.

-  Green: Link rate > 80 Mbps (fast)
-  Amber: Link rate > 50 and < 80 Mbps (medium)
-  Red: Link rate < 50 Mbps (slow)

Button Descriptions

The buttons on your Powerline adapters let you do the following:

- **Power On/Off switch.** Use the Power On/Off switch to turn the device on and off. When this switch is in the Off position, the filtered AC socket still has power.
- **Factory Reset button.** To return your Powerline adapter to its default factory settings, plug the adapter into a wall outlet and press the **Factory Reset** button for two seconds.
- **Security button.** Use the Security button to secure the Powerline network. For more information, see *Secure the Powerline Network* on page 19.

Safety Information

- For national approvals (approval schemes other than CB), relevant national standards for plug, socket-outlet, and direct plug-in units (for example, US) shall also be consulted while testing and approving such products according to the national standards.
- AC input rating: 100–240 Vac, 12A
- AC output rating: 250 Vac, 11.8A (maximum)
- Operating temperature: 0–40°C

- Check the electrical current for any device plugged into the filtered AC socket. Do not exceed home and product outlet ratings and electrical requirements.
- The socket-outlet shall be installed near the equipment and be easily accessible.
- Only power cords are allowed to be inserted into the filtered AC socket; no other equipment with a direct plug-in is allowed. Power cords needs to be a maximum of 1 m long and a minimum of 0.75 mm² of cross-sectional area.
- Do not plug devices into the XAUB2511 filtered AC outlet that exceed the product ratings. The output voltage of the filtered AC outlet is the same as the power outlet that the XAUB2511 is plugged into. To help avoid damaging your system, be sure that the attached devices are electrically rated to operate with the power available in your location.
- If the input AC voltage is less than 100 Vac, the device plugged into the filtered AC socket of the XAUB2511 might not perform as well as expected.
- **DO NOT PLUG MAJOR HOME APPLIANCES** into the filtered AC socket or into an attached power strip. The device is not intended to be used with home appliances such as air conditioners, power tools, space heaters, fans, hair dryers, ovens, or refrigerators.

Support

Thank you for purchasing this NETGEAR product. After installing your device, locate the serial number on the label of your product and use it to register your product at <https://my.netgear.com>.

You must register your product before you can use NETGEAR telephone support. NETGEAR recommends registering your product through the NETGEAR website.

For product updates, additional documentation, and support, visit <http://support.netgear.com>.

NETGEAR recommends that you use only the official NETGEAR support resources. You can get the user manual online at <http://downloadcenter.netgear.com> or through a link in the product's user interface.

Trademarks

NETGEAR, the NETGEAR logo, and Connect with Innovation are trademarks and/or registered trademarks of NETGEAR, Inc. and/or its subsidiaries in the United States and/or other countries. Information is subject to change without notice. © NETGEAR, Inc. All rights reserved.

Compliance

For the current EU Declaration of Conformity, visit http://support.netgear.com/app/answers/detail/a_id/11621/.

NETGEAR, Inc.
350 East Plumeria Drive
San Jose, CA 95134, USA



201-14348-03

June 2013